

# STERLING ESTATES

MODERN ARRIVES IN WASAGA



A

A

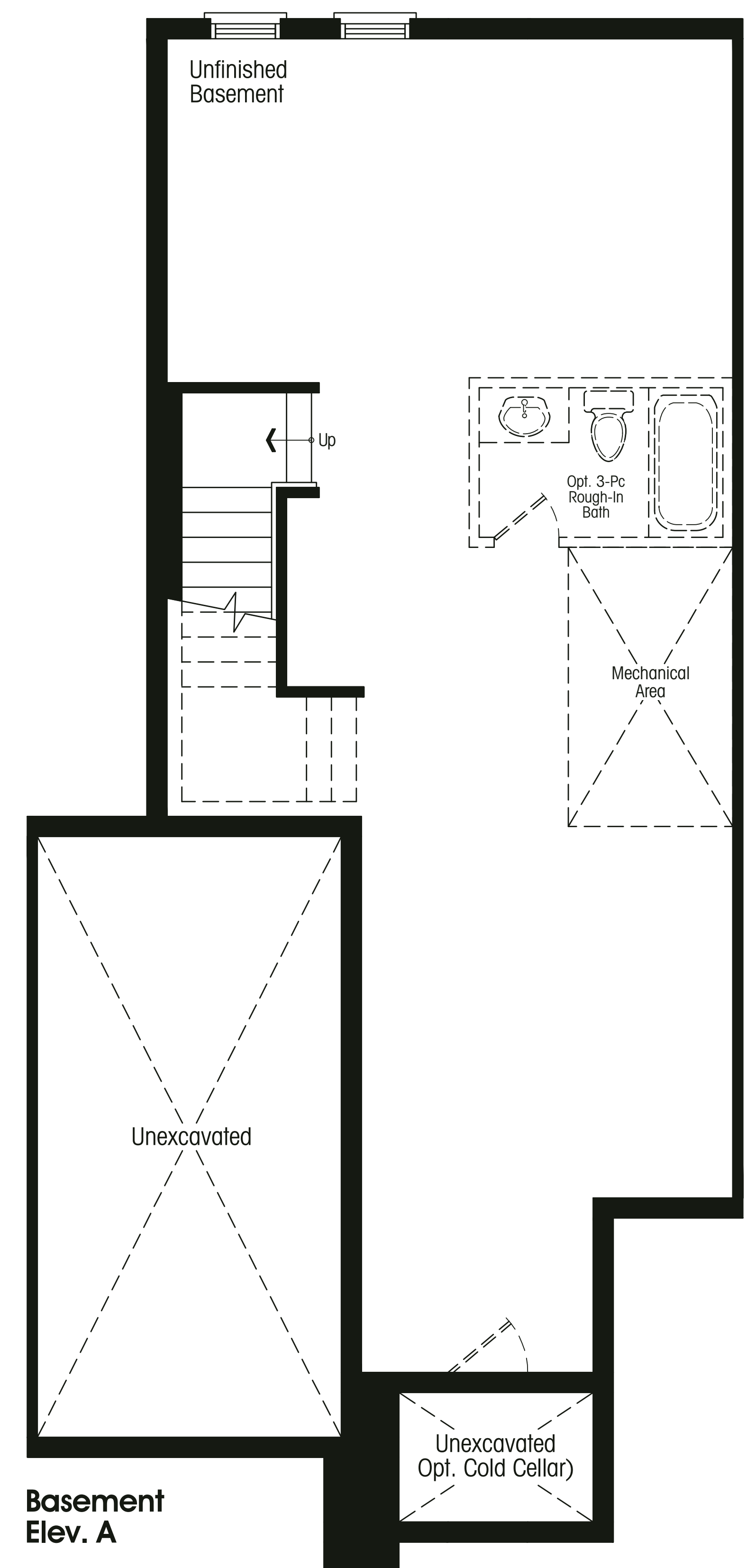
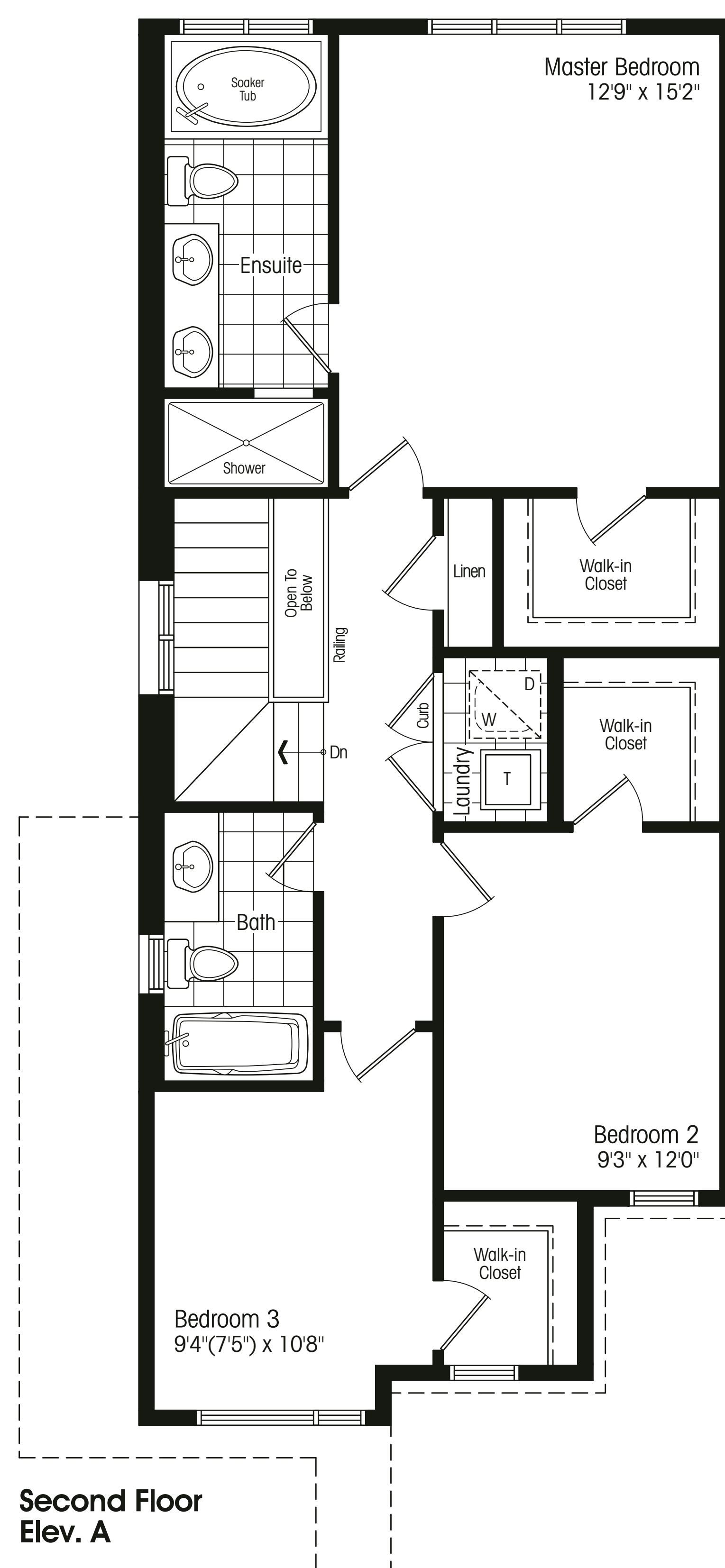
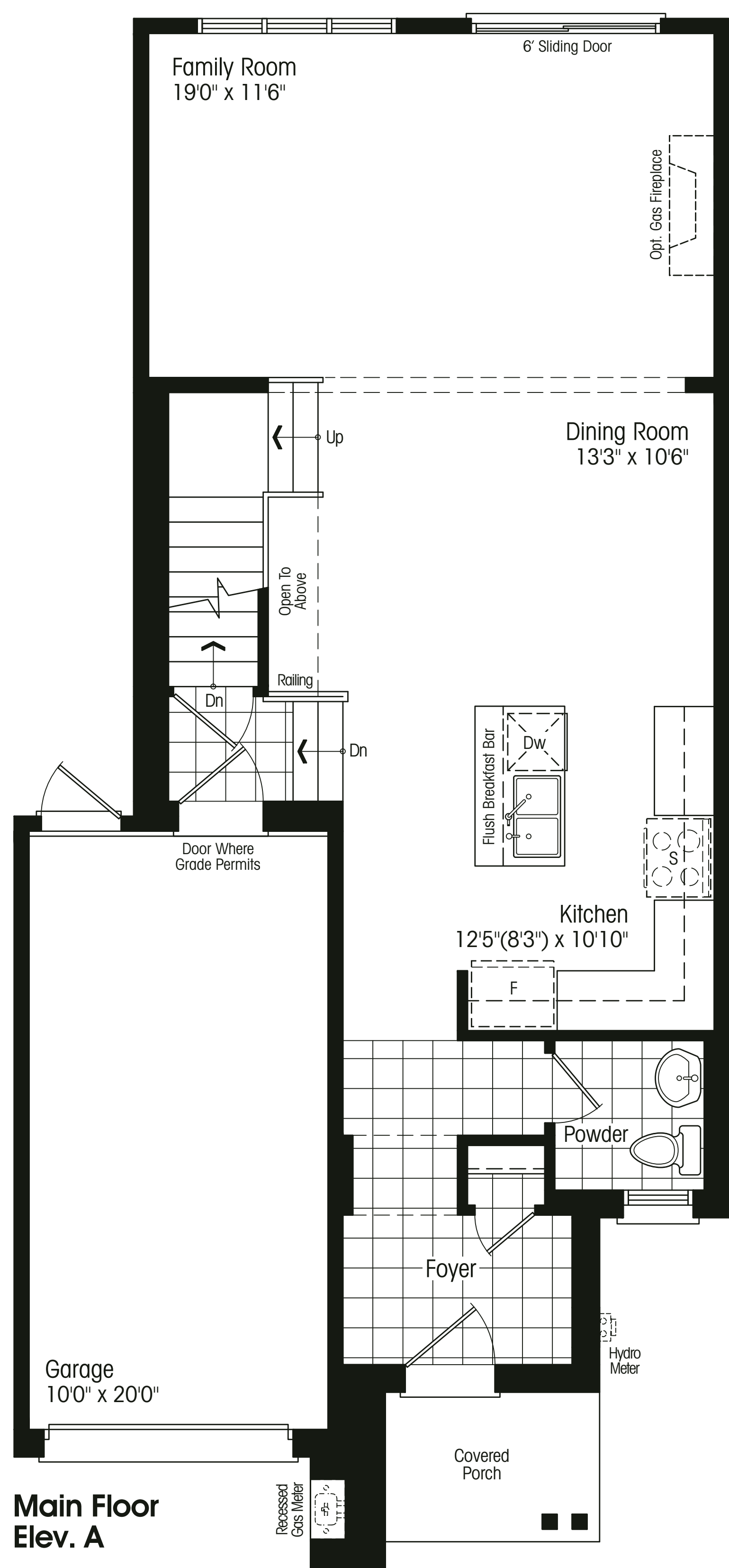
Block 24

## THE BEACH TOWNS THE PROUVÉ

elevation A 1658 sf

### JEAN PROUVÉ

French architect and designer Jean Prouvé was dubbed a "constructeur" by Le Corbusier for his ability to blend architecture and engineering without sacrificing aesthetic appeal.



Blocks 19 + 23



Block 24

T-3

Room sizes shown are approximate and measured in accordance with accepted industry methods, standards and practices. Square footage includes all finished interior space and enclosed open space belonging to each unit (balconies). Orientation of plans may be reversed and purchaser agrees to accept the same. Hydro and gas meter location may vary and is subject to Enbridge and/or Wasaga Distribution standards. Plans and specifications are subject to change without notice and subject to individual site conditions. All renderings are artist's concepts. E. & O. E., July 2019.