

# GEORGIAN BAY COLLECTION

WASAGA BEACH



## THE DUNES

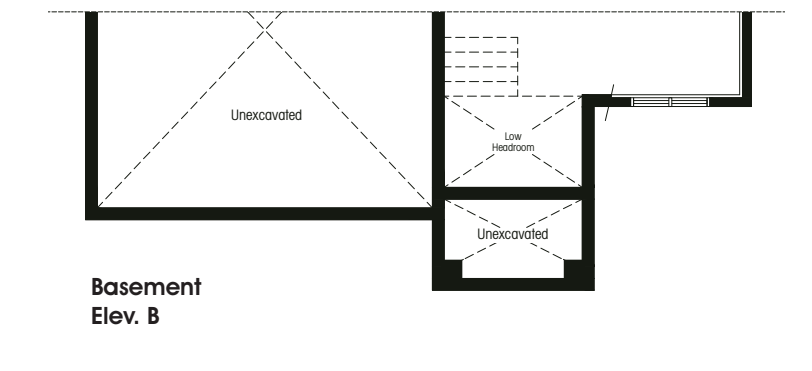
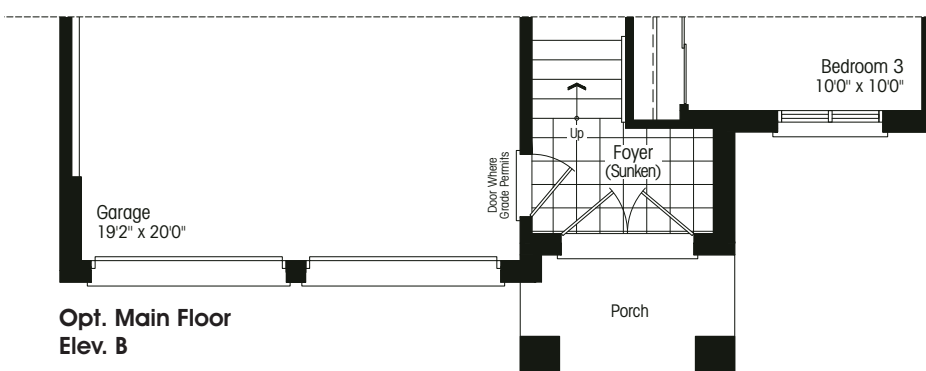
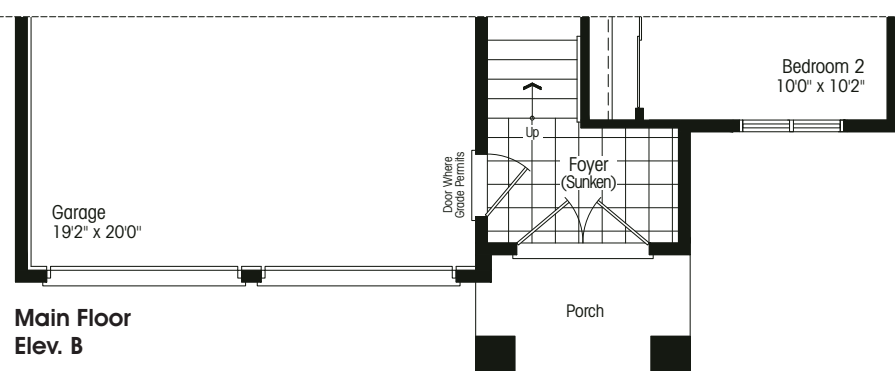
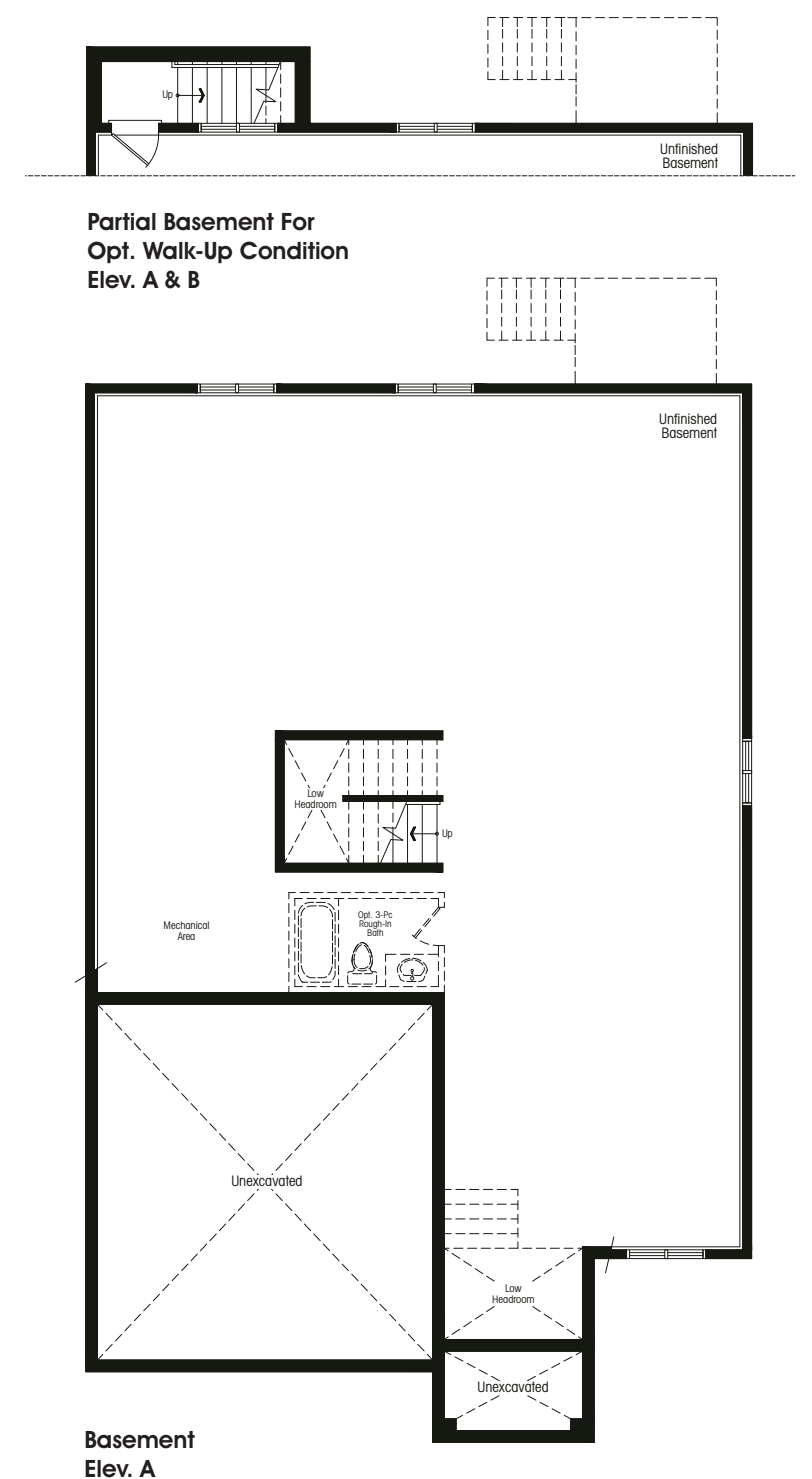
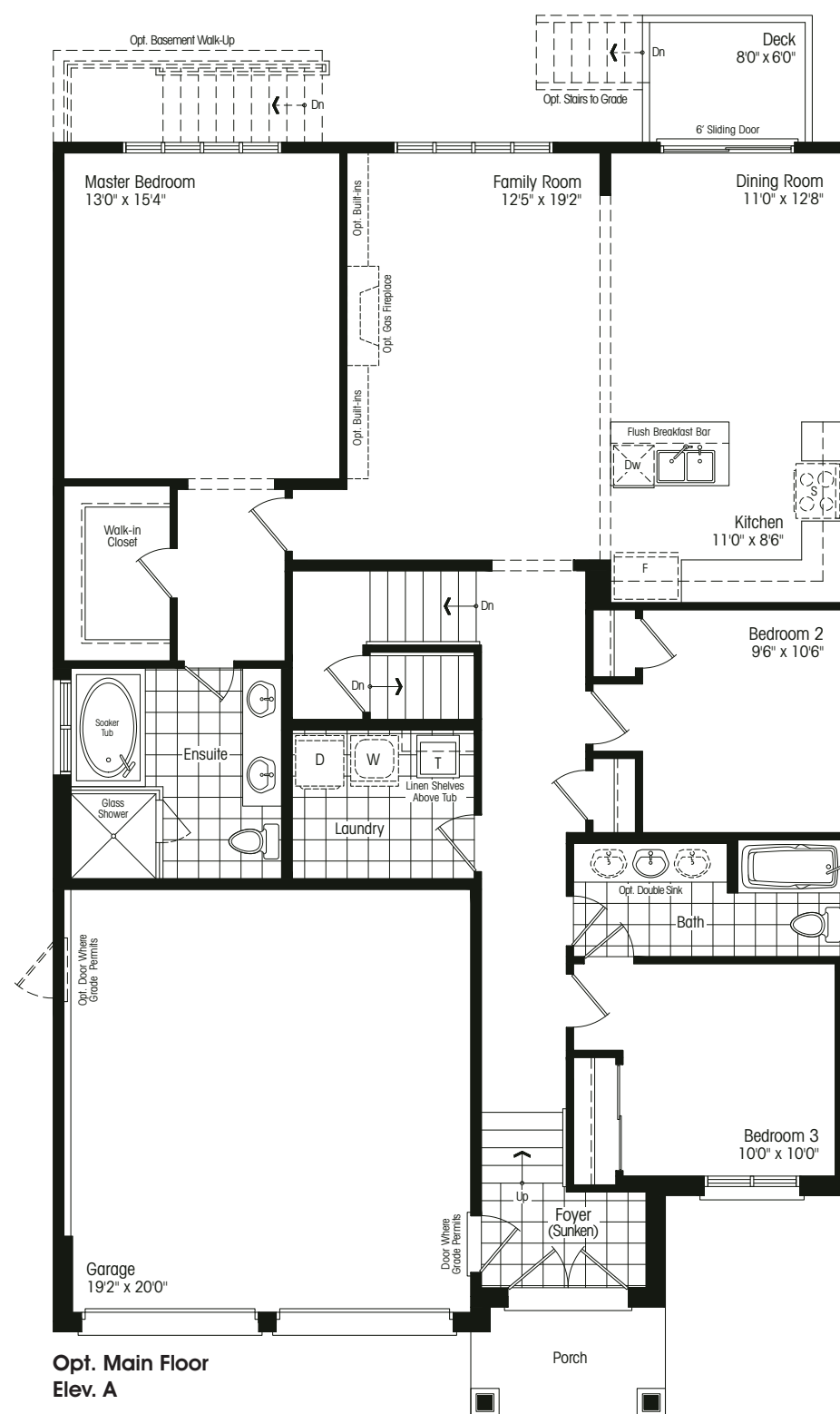
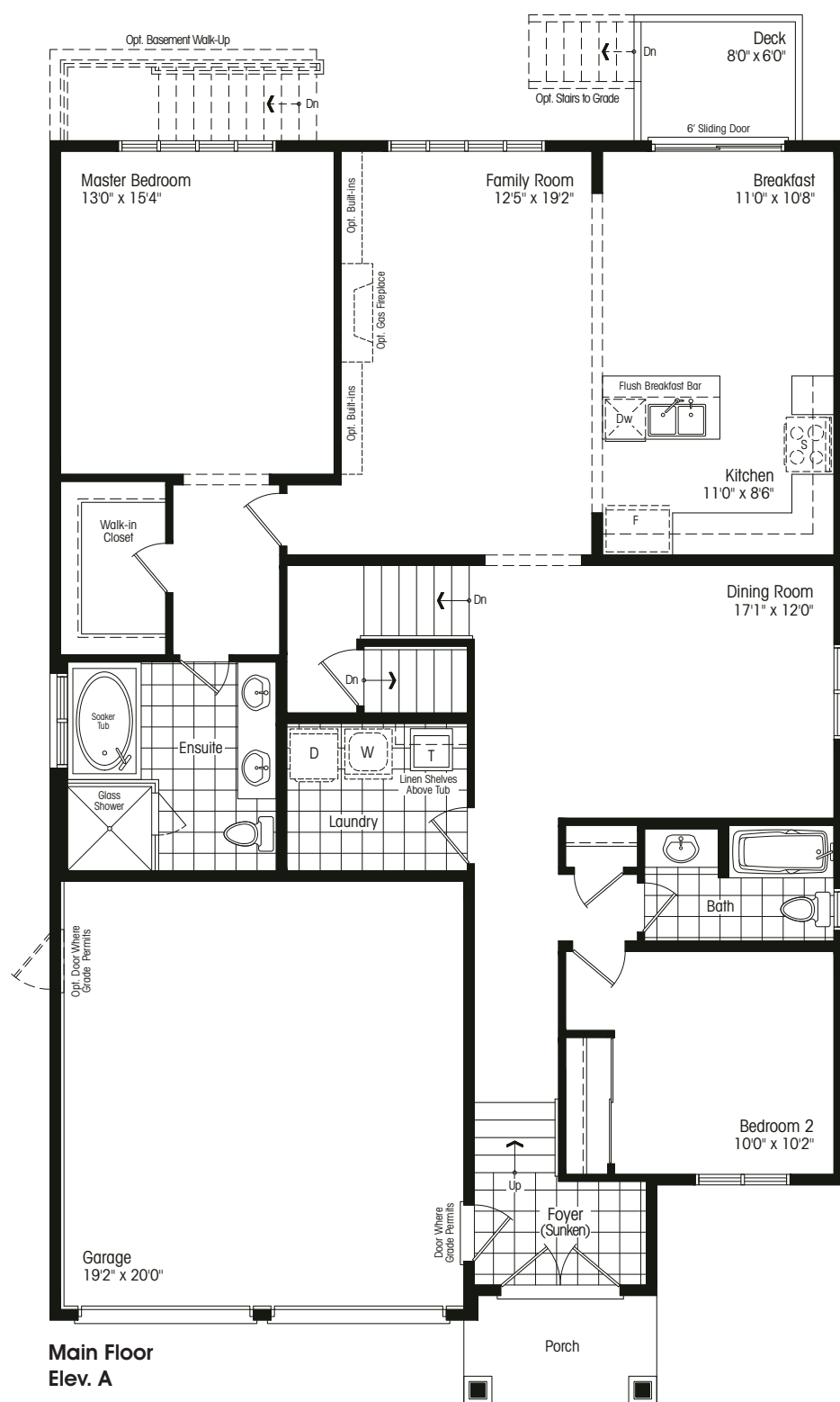
bungalow – elevation A/B 1636 sf

optional 3 bedroom A/B 1636 sf

These welcoming homes reflect elements of the Arts and Crafts design movement, celebrating their Georgian Bay setting. Covered entryways, stone columns and charming multi-paned windows add to the appeal of these spacious bungalow and bungalow-loft homes.

### THE DUNES

Wind-sculpted dunes are a breathtaking sight along the sandy shoreline of Wasaga Beach, the world's longest freshwater beach.



Elevation A 1636 sf



Elevation B 1636 sf

50-1

Room sizes shown are approximate and measured in accordance with accepted industry methods, standards and practices. Square footage includes all finished interior space and enclosed open space belonging to each unit (balconies). Orientation of plans may be reversed and purchaser agrees to accept the same. Plans and specifications are subject to change without notice and subject to individual site conditions. All renderings are artist's concepts. E. & O. E. August 2021.