



STERLING ESTATES

MODERN ARRIVES IN WASAGA

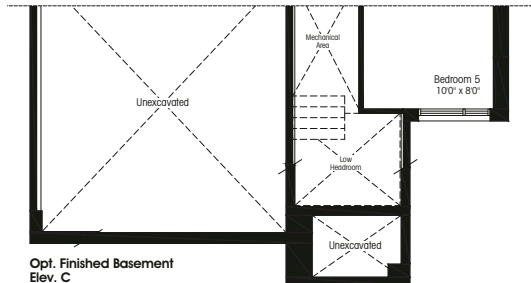
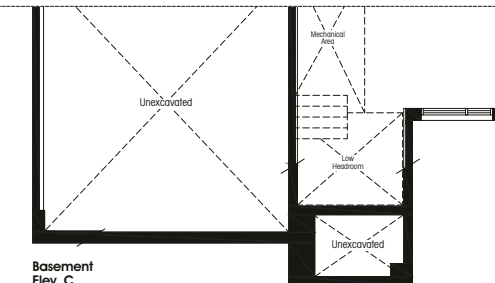
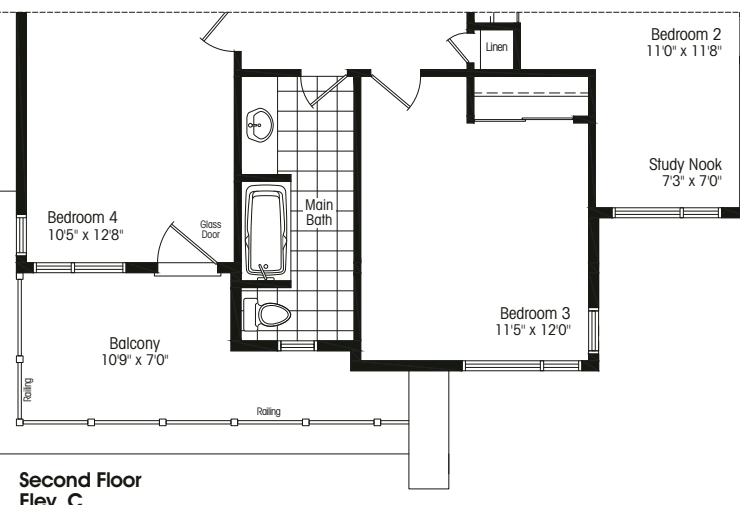
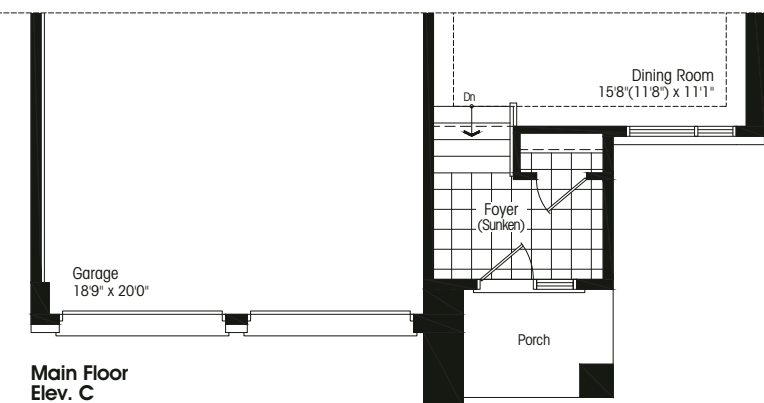
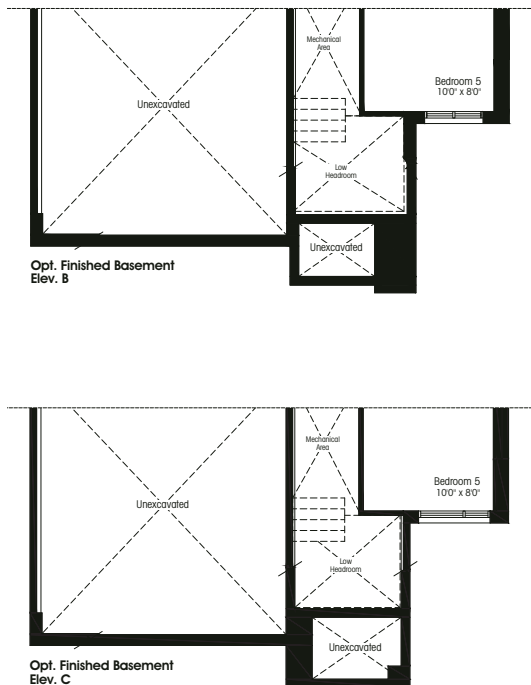
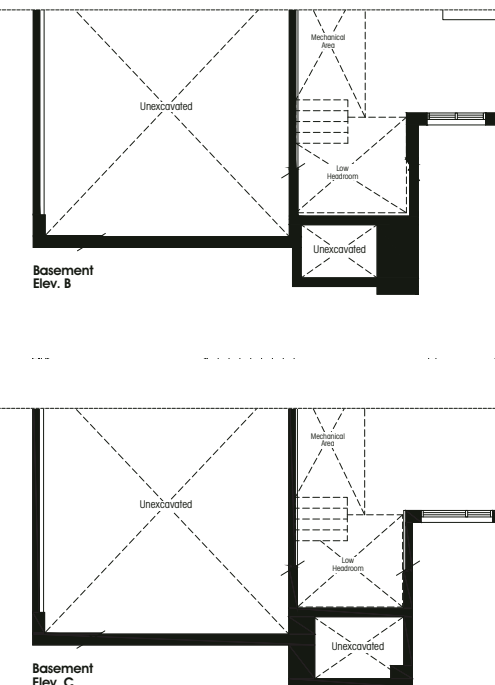
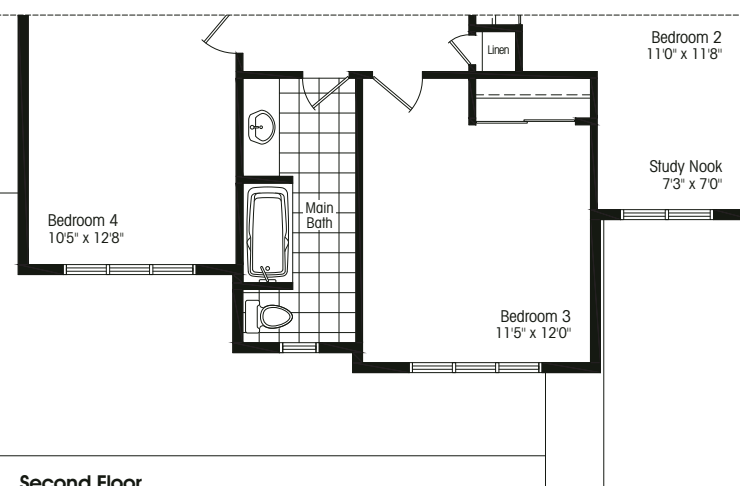
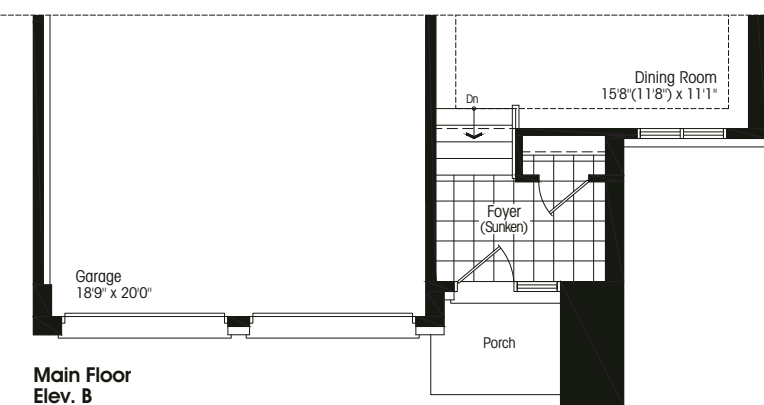
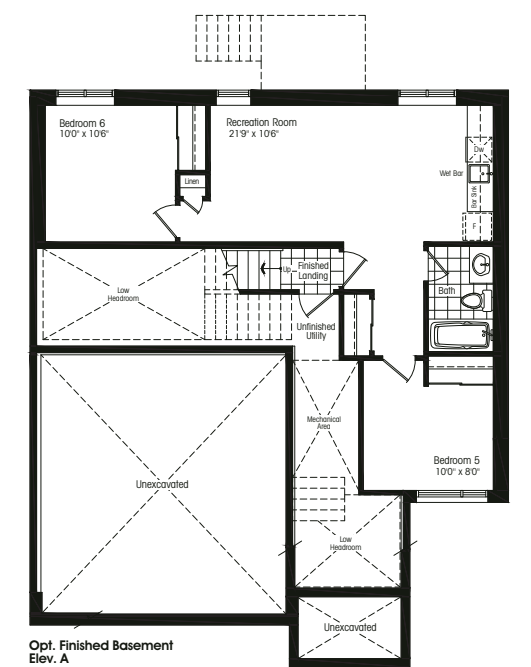
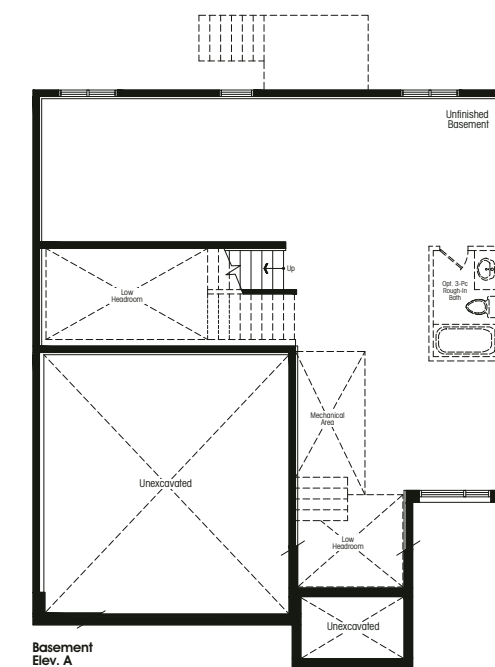
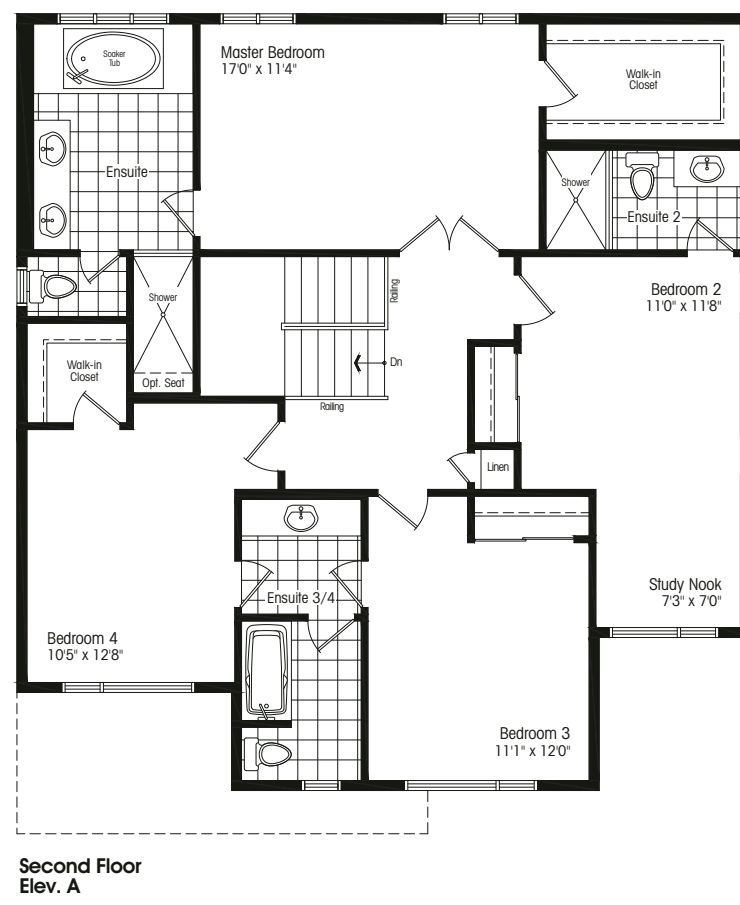
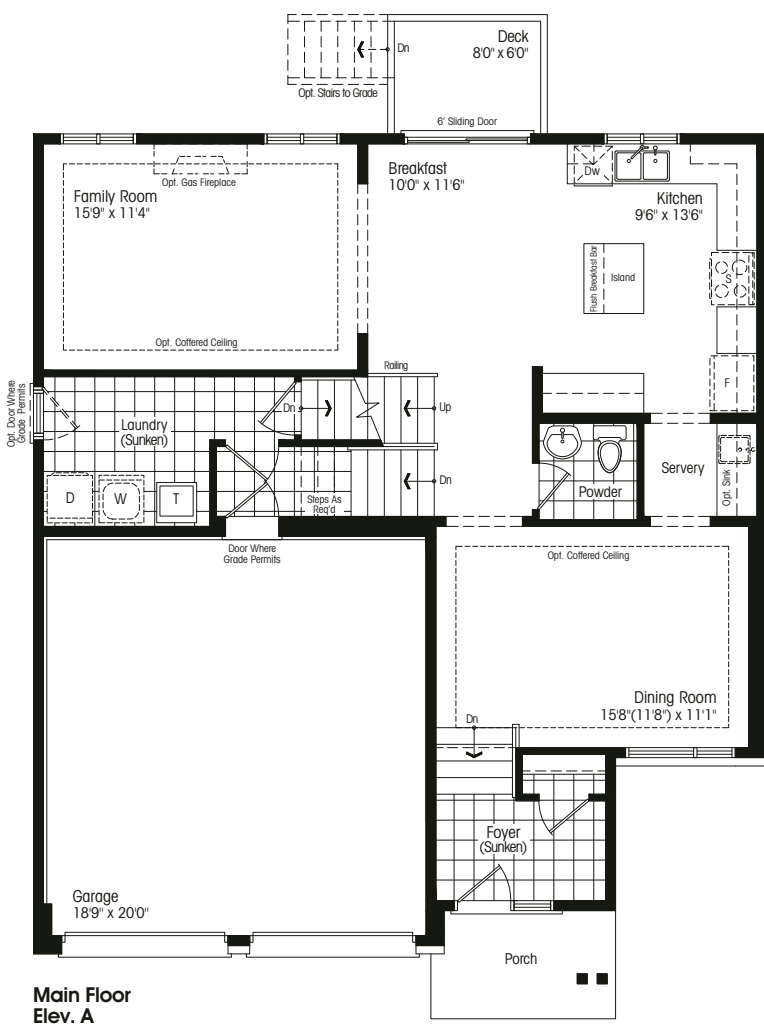


THE VIGNELLI (Mod.)

2 storey – elevation A 2325 sf
elevation B 2327 sf, C 2319 sf
opt. finished basement A/B/C 698 sf

MASSIMO VIGNELLI

Italian architect-designer Massimo Vignelli used modernist design in all of his work, from packaging to housewares to wayfinding, including the iconic New York City subway signage.



Elevation A 2325 sf



Elevation B 2327 sf



Elevation C 2319 sf

49-4 (Mod.)

Room sizes shown are approximate and measured in accordance with accepted industry methods, standards and practices. Square footage includes all finished interior space and enclosed open space belonging to each unit (balconies). Orientation of plans may be reversed and purchaser agrees to accept the same. Plans and specifications are subject to change without notice and subject to individual site conditions. All renderings are artist's concepts. E. & O. E. November 2021.